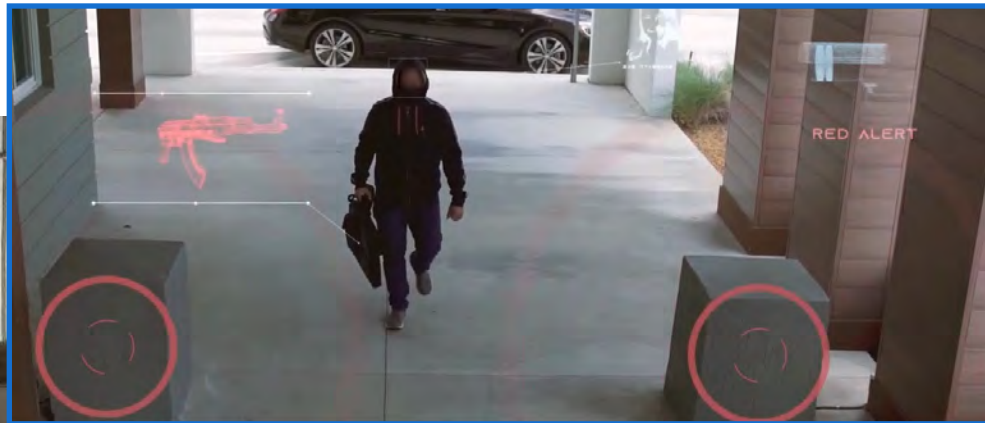




Pioneering Covert Weapon Detection



Continuously screening for concealed weapons without disrupting traffic flow. It is non-intrusive and there is no need for additional security force

About Smart CT Solutions

Rooted in U.S. Military Technology Now Available Commercially

Our roots are in U.S. Military technologies with more than a decade of experience in development, fielding, and monitoring perimeter surveillance and route security.

Our Purpose...

to create safe places through covert threat detection systems. We provide enhanced security against weapons threats.

Our Vision...

to provide on-site protection against security threats using digital technology and without disrupting the flow of traffic into the facility. We empower our customers to rapidly and successfully adopt new technologies by providing innovative solutions against weapon threats.



Free Flow

Indoor or outdoor – No queuing and no people waiting to enter



Simple Installation

Installed in the morning and running by the afternoon without affecting IT networks



Concealed Detection

Detects concealed threat items on a person or bag with no privacy concerns

Our Technology

Because every metal object has a different signature in motion, security is alerted to the type of threat and can act accordingly. The sensors and cameras that are integrated into our systems, work in tandem to locate the weapon, and at the same time, ignore common items. Our systems use machine learning and Artificial Intelligence (AI) with over 14 million weapon signatures. It continually learns and improves.

Our Platform

Our platform enhances monitoring capabilities to provide real-time incident details, resource availability, and robust management operations in one single dashboard.

Our Leadership

Our progressive leadership team is made up of dedicated, focused, and professional executives. Working together, our knowledge and decades of business and technical experience, make a difference in the security and safety of people and places around the globe.

The Right Choice for Security and Safety

Weapon Detection System

We Detect Concealed Weapons Where Other Systems Can't

Our Weapon Detection System detects concealed threats, such as firearms, knives, and bombs on a person or in baggage.

No Disruptions to Traffic Flow

The system allows you to continuously screen for concealed weapons without disrupting traffic flow. It is non-intrusive and needs no additional security force.

Can Discern Between Weapons and Common Objects

Ideal for entrances at large facilities, its magnetic sensor can differentiate between a weapons and other common metal objects such as a phone or laptop. The system uses artificial intelligence, machine learning and remote human interface to offer an effective covert method for the detection of hidden weapons.

No Need for a Metal Detector

People move through the security sector at normal speed, without the extra burden of having them walk through a metal detector or similar device. The sensor can screen an unlimited number of people flowing into the facility at one time.

Omni-Directional Sensors

Sensors are omni-directional, sending signals in all directions, including above. An individual does not have to walk between the two sensors for a weapon to be detected. Even if they walk outside of the sensors, weapons will still be detected.



Key Characteristics

- ★ Designed to detect weapon threats such as concealed firearms on persons or bags
- ★ Operates autonomously
- ★ Offers high detection performance with low power
- ★ Uses highly sensitive magnetic moment sensor technology
- ★ Sensors are network connected
- ★ Incorporates our cognitive detection software with advanced signal processing algorithms
- ★ Automatically eliminates non-moving targets without using averaging algorithms
- ★ No portal configuration required.
- ★ Can be placed in walls, ceilings, or floors – easy covert and/or overt installation
- ★ No disruption to customer flow. Each entry point can process an unlimited number of people flowing into the facility at one time
- ★ No health, privacy concerns, or impact on pregnant women, pacemakers, etc.
- ★ AI/machine learning algorithm with over 14.0M live samples
- ★ Human analysis + machine learning approach that is years ahead
- ★ The sensor does not alarm or make a noise
- ★ No additional security staff required – best possible ROI



Enhanced Security Against Weapon Threats

Gunshot Detection System

Receive Immediate Notification

Our Gunshot Detection System identifies gunfire and sends a notification in less than a quarter of a second. The dual sensor system is robust and can be integrated with any of our Smart CT Systems, or any other existing alarm system. Alarms generate automatically during an active shooter event and can be connected to 911 Computer Aided Dispatch systems to provide immediate and error-free alerts.



Multi-modal Detection Capabilities

Our multiple modality sensor system dramatically reduces false alarms so you can be confident that law enforcement will be automatically notified of a critical active shooter incident.



Dual Infrared and Acoustic Sensors

Covert installation in the form of a smoke detector, facilitates integration in a wide variety of locations

Key Characteristics

- ★ Real-time communication between on-site security personnel and emergency responders
- ★ Wall or ceiling mounted for easy installation
- ★ Dual Infrared and Acoustic Sensor System -- zero false alarms
- ★ Ethernet Integration -- easily connects to any network
- ★ Power over Ethernet -- one cable installation.
- ★ Visualize the incident by integrating our Weapon Detection System with cameras and video feeds
- ★ Improves situational awareness by identifying the exact location where shots have been fired
- ★ Includes a visual map of the location where each shot is fired, along with a time stamp and shot counter



Real-time Situational Awareness

Perimeter Protection

Proven Results

Our Smart CT Perimeter Security System uses buried fiber optic cable to create a sensor array that encompasses the facility. This provides real-time identification of surface and subsurface geophysical phenomenon to enable specific threat-based responses. Each system provides up to 40 kilometers of continuous, all weather monitoring along designated routes or site perimeters.



A History of Proven Performance

- ★ 8+ years of past performance providing 24/7/365 monitoring coverage along routes and perimeters
- ★ 1,000 km of commercial fiber along dozens of routes and several installation perimeters in support of overseas U.S. operations
- ★ 100 km of commercial fiber installed along the U.S. Southwest Border
- ★ Proven performance supporting military operations and border security with similar systems installed in over 35 locations and different environments globally.



Key Characteristics

- ★ Utilizes commercial telecommunications fiber optic cable, a custom fiber optic interrogator, and proprietary software for data analysis, threat detection, classification, and alert display
- ★ Detects surface and subsurface geophysical activities (digging, walking, vehicles, etc.) 24 hours a day, 7 days a week, in all weather conditions
- ★ Uses a small portion of cable fibers leaving a large capacity for high performance communications bandwidth
- ★ Minimal hardware above-ground footprint
- ★ Integrates with multiple camera systems and other sensors
- ★ Records up to 28 days of data/activity for future reference



Protecting Property and Personnel

Suspect Tracking

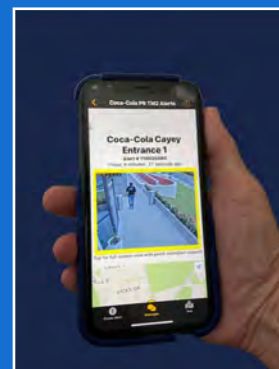
Real-Time Tracking of Suspects

Our Suspect Tracking System locates and follows suspects identified by our Weapon Detection System. By integration with cameras throughout the facility and utilizing state of the art machine learning algorithms, suspects can be identified by behavioral analysis and then be intercepted for a secondary inspection.



Key Characteristics

- ★ Triggered by our Weapon Detection System for follow-up actions
- ★ Integrated with the camera system of the facility
- ★ Utilizes state of the art AI analytics and machine learning
- ★ Highly capable of detection even in low-light or low-resolution
- ★ Automatically locates and follows the suspect even through gaps in the view
- ★ Identification is performed in real-time



Identify Suspects by Behavioral Analysis

Explosive Detection Systems

Bottled Liquid Explosives

Our Bottled Liquid Explosive System offers high performance screening of bottled liquids in a wide range of containers that provides accurate findings. The instrument uses Nuclear Magnetic Resonance technology to check bottles for explosives, delivering results in just seconds.

Explosive Detection System

Our Explosive Detection System provides high performance portable electronics screening of a wide range of devices with accurate findings. The system uses ORS radiofrequency technology to check electronics for plastic and powder explosives, delivering results in just seconds.



How the Bottled Liquid System Works

1. Place device in pullout tray and press "Inspect"
2. Detects liquid explosives in any configuration
3. An alarm is delivered in seconds

How the Explosive Detection System Works

1. Place device in pullout tray and press "Inspect"
2. An alarm is delivered in seconds



Key Characteristics

- ★ Minimal user intervention
- ★ No image interpretation
- ★ No lasers or ionizing radiation
- ★ Simple to maintain with no consumables
- ★ Reports specific threat materials
- ★ Ethernet and USB connectivity
- ★ Download reports to removable storage
- ★ Links to a Data Management System
- ★ No need to remove bottles from packaging (BLS)

Detection of Even Small Amounts of Explosives

Applications

Whatever your industry and application, you can be confident that with Smart CT Solutions, you are receiving expert advice, the most advanced products, and superior consulting services. We have over 40 years of combined technology experience in various industries such as education, retail, finance/banking, hospitality, healthcare, government, and transportation. At Smart CT Solutions, innovation is in our DNA.



Education



Healthcare



Gaming



Transportation



Corporate



Retail



Places of Worship



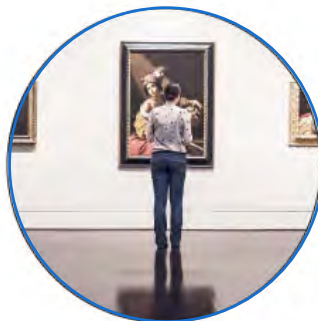
Government



Critical Infrastructure



Hospitality



Museums



Cruise Lines

...and Much More. Learn How We Provide Better Safety and Security for Your Industry



Get In Touch!

800.685.9177 ● 305.239.8869

WhatsApp (International): +1 305.239.8869

Smart CT Solutions

6070 NW 102 Avenue, Suite 404
Doral, FL 33178

info@smartcts.net

www.smartcts.net