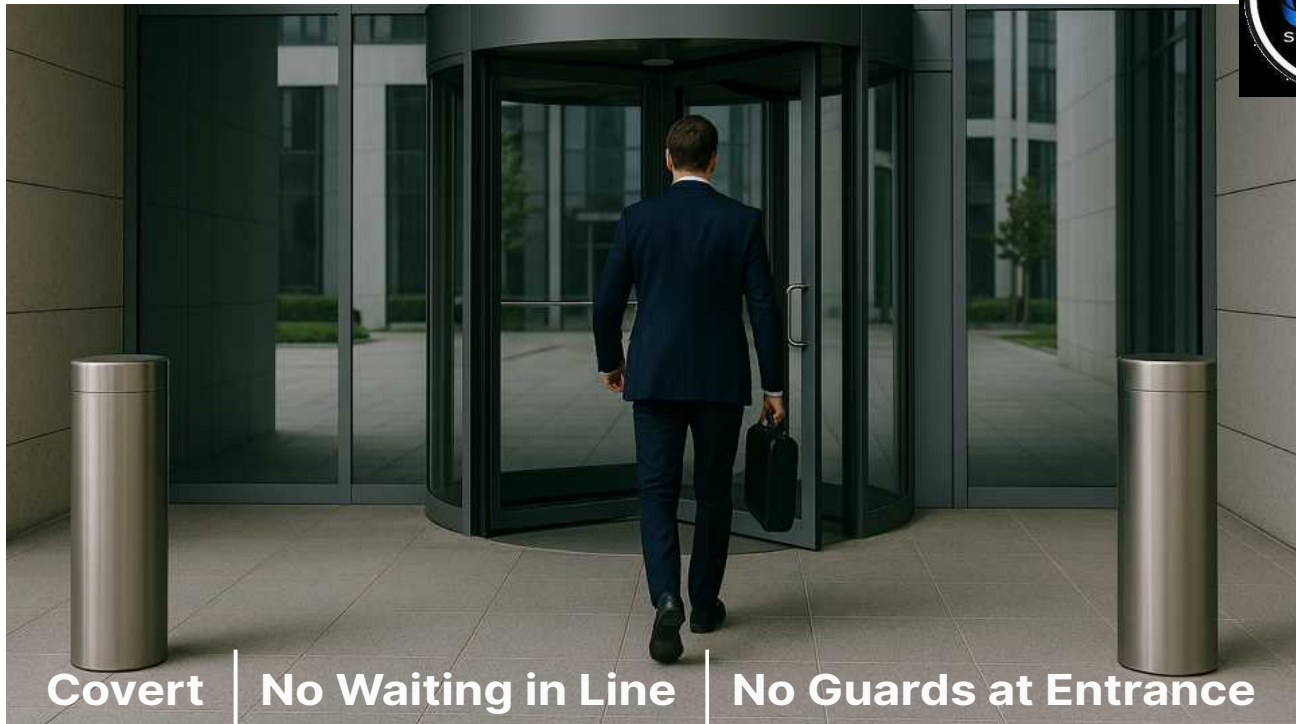


Weapon Detection Without the BottleNecks



Covert | No Waiting in Line | No Guards at Entrance

Our advanced AI technology for high-volume weapons screening eliminates bottlenecks. Discrete sensors scan both individuals and bags as visitors move quickly through the entrance without forming lines. Manned security is no longer required at these entry points, reducing operational costs to an absolute minimum.

The Solution

Detection

The system uses metal-in-motion technology within a 10-foot lane between two discreet bollards to detect firearms and filter out common metal objects

Analysis

The system is powered by an NVIDIA edge processor that runs an advanced AI model, which utilizes our extensive weapon database to vet metal objects and specifically target firearms.

Verification

When a weapon is detected, a remote human analyst confirms the threat and assigns it to the proper threat level.

Alert

Upon verification, the system delivers an alert (image, location, and threat level) to the security team's phone App or SOC for immediate action per company protocol.

Features & Benefits

Extreme Throughput: Screens over 7,200 people per hour, achieving speeds 10 times faster than traditional security, with no queuing required.

Discreet & Safe: The system uses passive technology that will not affect medical devices, while remaining covert and unintrusive.

Lowest TCO/Max ROI: Eliminates security staffing costs at the entrance, providing the lowest Total Cost of Ownership and Return on Investment.

Future-proof AI: Machine Learning and advanced algorithms continuously update and improve performance.

Actionable Intelligence: Delivers verified alerts (images, locations, and threat levels), increasing the safety and effectiveness of on-site security personnel.

Comprehensive Reporting: Provides detailed historical data and advanced search capabilities for thorough review and evidence assessment.

Fast Setup: Enables quick installation (indoor and outdoor) using straightforward CAT-6 cabling, without affecting the IT network.

Securing the Safety of All Communities

Hospitals | Casinos | Higher Education | Corporate Locations | Museums | Warehouses

Operational and Reporting Features

Individual Identification

The system swiftly and accurately identifies the suspect, even in a crowd, whether the weapon is on their body or concealed in a bag.



Analysis & Notification

Remote analysts are essential for providing critical intelligence to local security personnel. Their duties involve generating pre-warning threat levels, supplying images of suspects, and pinpointing the specific areas where threats are detected.



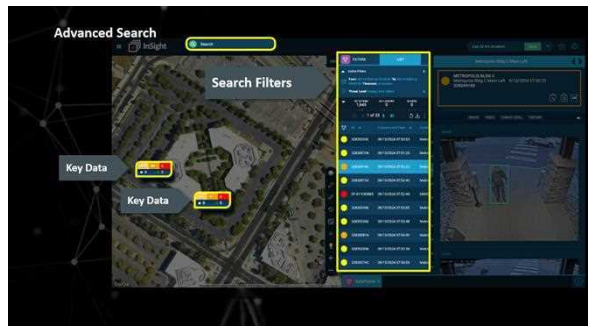
Advanced Guard Safety

The remote analysts assign a corresponding color-coded threat level, which serves as a pre-warning notification that safeguards personnel and ensures protocol is followed.



Performance Metrics & Analytics

Provides on-demand reports that include detailed alert summaries, visitor counts, and detection statistics, ensuring full operational control.



US: 800.685.9177 | WhatsApp/Cellular: 305.239.8869
info@smartcts.net | www.smartcts.net